



# THE WIZARDING *World of Harry Potter*

Step into the Wizarding World of Harry Potter™ at Universal Orlando Resort, now featuring three spellbinding lands: Diagon Alley™, Hogsmeade™, and the all-new Ministry of Magic™. Stroll through Diagon Alley™ to explore magical shops and brave Harry Potter and the Escape from Gringotts™. In Hogsmeade™, sip butterbeer™ at the Three Broomsticks™, stock up on sweets at Honeydukes™, and board the Hogwarts™ Express. Don't miss thrilling attractions like Harry Potter and the Forbidden Journey™ and Hagrid's Magical Creatures Motorbike Adventure™. With interactive wands and immersive details, this is a must-visit for every witch and wizard.

# THE WIZARDING WORLD OF HARRY POTTER

*Universal Orlando Resort*

Universal Orlando features three enchanting Harry Potter-themed areas: Diagon Alley at Universal Studios, Hogsmeade at Islands of Adventure, and the Ministry of Magic at Epic Universe. The Hogwarts Express links Diagon Alley and Hogsmeade, immersing guests in the magical world. Each area offers unique experiences, including spell-casting, Butterbeer, and exploring the Ministry. With interactive elements and authentic settings, fans will enjoy a memorable adventure at Universal Orlando Resort.

## *Diagon Alley*

---

Diagon Alley at Universal Studios Florida transports visitors into the bustling heart of the wizarding world, featuring iconic locations like Gringotts Wizarding Bank and Ollivanders wand shop. Guests can experience thrilling rides, magical shops, and the fire-breathing dragon atop Gringotts.

## *Hogsmeade*

---

Hogsmeade at Islands of Adventure offers a charming, snow-covered village setting with landmarks such as Hogwarts Castle and the Forbidden Forest. Visitors can enjoy enchanting attractions, dine at the Three Broomsticks, and shop at Honeydukes.

## *Ministry of Magic*

---

Ministry of Magic at Epic Universe immerses fans in the magical streets of 1920s Paris and the British Ministry of Magic in the 1990s. Guests can encounter fantastic beasts, explore thrilling rides like Harry Potter and the Battle at the Ministry, and dine at wizarding cafés.

## *Hogwarts Express*

---

A visit to Hogwarts wouldn't be complete without a journey on the Hogwarts Express. This iconic train serves as both an attraction and a mode of transportation between the two parks, connecting King's Cross Station in Diagon Alley with Hogsmeade Station in Hogsmeade. To experience this magical ride, a Park-to-Park ticket is necessary. Guests should plan to ride the train twice, as the storyline varies depending on the direction of travel.



# DIAGON ALLEY

*an Overview*

*Step through the hidden brick wall and into Diagon Alley at Universal Studios, where the wizarding world unfolds in thrilling detail. From spell-casting to dragon-chasing, every corner offers something magical to discover.*

## **THE LONDON WATERFRONT**

Start your journey along the London Embankment. Snap a photo with the Knight Bus and spot Kreacher peeking from 12 Grimmauld Place. Then slip behind the brick wall and enter Diagon Alley itself.

## **DIAGON ALLEY**

The heart of the wizarding shopping district buzzes with activity. Shop at Weasleys' Wizard Wheezes, visit Ollivanders for a wand, and ride Harry Potter and the Escape from Gringotts beneath the fire-breathing dragon perched on the bank.

## **HORIZONT ALLEY**

This quieter side street is perfect for exploring hidden shops like Magical Menagerie and Wands by Gregorovitch. Spell-casting windows offer hands-on magic for all ages.

## **CARKITT MARKET**

An open-air courtyard where magic and entertainment meet. Grab a Butterbeer, browse market carts, and catch a live show by Celestina Warbeck and the Banshees.

## **KNOCKTURN ALLEY**

Step into the shadows to discover the darker side of magic. Inside Borgin and Burkes, you'll find mysterious artifacts and eerie surprises—plus a cool escape from the Florida sun.

**Every corner of Diagon Alley is packed with wizarding wonder, making it a must-see for witches, wizards, and Muggles alike!**

# DIAGON ALLEY

## Attractions

### **HARRY POTTER AND THE ESCAPE FROM GRINGOTTS**

An immersive, multi-dimensional thrill ride through the vaults of Gringotts Bank featuring 3D effects, motion simulation, and physical drops.

- *Must be at least 42" (107 cm)*
- *Guests under 48" must be accompanied by a supervising companion.*
- *Guests must transfer from a wheelchair.*
- *Not recommended for those with motion sickness, heart conditions, or back/neck issues.*

### **OLLIVANDERS WAND EXPERIENCE**

An interactive experience where a wand chooses a wizard.

- *No ride or height restriction.*
- *Accessibility: Wheelchair accessible; standing room only.*
- *Notes: One guest per group is chosen for the show — not guaranteed.*

### **HOGWARTS EXPRESS – KING'S CROSS STATION**

A scenic, story-driven train ride to Hogsmeade featuring special effects and the Platform 9¾ illusion.

- *Park-to-Park ticket required*
- *No minimum height*
- *Guests under 48" must be accompanied by a supervising companion.*
- *Guests can remain in standard wheelchair.*
- *Guests with ECVs must transfer to a manual wheelchair.*
- *No lap sitting — each rider needs their own seat.*



# DIAGON ALLEY

## *Dining Options*



### THE LEAKY CAULDRON

Sit-down service with British classics like Bangers & Mash, Toad in the Hole, and Cottage Pie. *Open for breakfast, lunch, and dinner.*



### FLOREAN FORTESCUE'S ICE-CREAM PARLOUR

Artisan hard and soft-serve ice creams in flavors like Butterbeer, Clotted Cream, Chocolate Chili, and more.



### THE HOPPING POT

A walk-up stand in Carkitt Market serving Butterbeer, Pumpkin Juice, and other wizarding drinks, plus a few snack items.



### THE FOUNTAIN OF FAIR FORTUNE

A charming beverage bar near Knockturn Alley offering Butterbeer and specialty wizard drinks in a shaded setting.



### SNACK STALLS & COUNTERS

Small, themed counters and stands offering bottled drinks, pastries, and grab-and-go treats.

# DIAGON ALLEY

*Entertainment*



## THE TALES OF BEEDLE THE BARD

Live puppet shows bring wizarding fairy tales like The Tale of the Three Brothers to life on the Carkitt Market stage.



## CELESTINA WARBECK AND THE BANSHEES

A jazzy, high-energy musical performance by the “Singing Sorceress” and her enchanted backup singers.



## INTERACTIVE WAND MAGIC

Guests can cast spells at over a dozen hidden locations using interactive wands sold in the land.



## GRINGOTTS MONEY EXCHANGE

An interactive bank branch where you can chat with a goblin and exchange Muggle money for Gringotts banknotes.

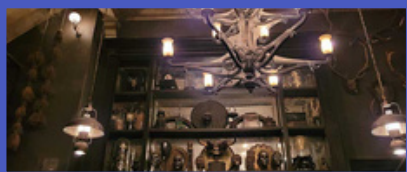


## PLATFORM 9<sup>3</sup>/<sub>4</sub> ILLUSION

A clever visual effect in King’s Cross Station, where guests appear to walk through a brick wall to board the Hogwarts Express.

# DIAGON ALLEY

*Shopping*



## BORGIN AND BURKES

A dark and eerie shop in Knockturn Alley selling sinister artifacts, cursed objects, and Death Eater memorabilia.



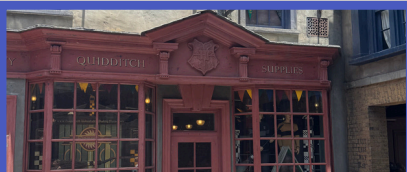
## OLLIVANDERS WAND SHOP

The iconic wand shop where guests can witness a wand choose a wizard and browse a full selection of collectible and interactive wands.



## MADAM MALKIN'S ROBES FOR ALL OCCASIONS

A wizarding fashion boutique offering house robes, ties, scarves, and formal dress attire.



## QUALITY QUIDDITCH SUPPLIES

A sporty shop stocked with house team jerseys, brooms, Golden Snitches, and Quidditch-themed gear.



## WEASLEYS' WIZARD WHEEZES

A whimsical joke shop filled with magical gags, novelty toys, and colorful merchandise straight from Fred and George's imagination.



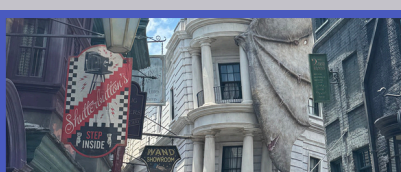
## WISEACRE'S WIZARDING EQUIPMENT

A mystical shop offering magical instruments, astronomy gear, and Hogwarts house-themed souvenirs — also the Gringotts ride exit.



## SCRIBBULUS

A magical stationery store featuring quills, parchment, ink, notebooks, and wizard-style writing tools.



## SHUTTERBUTTON'S

A vintage-style photo studio where guests can pose for moving wizard portraits captured in souvenir photo albums or videos.



## WANDS BY GREGOROVITCH

A smaller wand kiosk named after the rival wandmaker, offering alternative wand designs and unique lore-based options.





# HOGSMEADE

## Overview

*The bustling main stretch of the wizarding village, lined with snow-covered rooftops, magical shops, Butterbeer carts, and the entrance to Three Broomsticks. Located at Islands of Adventure.*

### **HOGWARTS CASTLE**

An iconic centerpiece of the land, this towering replica of the castle houses Harry Potter and the Forbidden Journey and features a walk-through queue showcasing classrooms, the Portrait Gallery, Dumbledore's office, and more.

### **HOG'S HEAD ALLEY**

A quieter area beside the Three Broomsticks, home to the Hog's Head Pub, with views of the boar-headed bar taps and connections to the pub's backstory from the books.

### **FLIGHT OF THE HIPPOGRIFF COURTYARD**

A more open section near Hagrid's Hut, where guests can ride the family coaster and learn how to properly bow to a Hippogriff.

### **TRIWIZARD STAGE AREA**

An outdoor stage across from Hogwarts Castle, where guests can watch live shows like the Triwizard Spirit Rally and Frog Choir performances throughout the day.

### **HOGSMEADE STATION**

The train station where guests board the Hogwarts Express to travel between Hogsmeade and Diagon Alley (Park-to-Park ticket required), featuring a rustic boarding area and themed train platform.

**While the whole land is unified by its charming wintry village aesthetic, these zones help structure the guest experience, making it easier to navigate between shopping, dining, rides, and shows.**



A banner for Hogsmeade Attractions featuring a blue background with a stone wall and a train on the left, and a dark, atmospheric scene on the right. The word "HOGSMEADE" is in large, white, serif capital letters, and "Attractions" is in a white, cursive script below it.

# HOGSMEADE

## Attractions

### **HAGRID'S MAGICAL CREATURES MOTORBIKE ADVENTURE**

An epic story coaster through the Forbidden Forest, featuring real sets, magical creatures, launches, and a ride vehicle that lets you choose between motorbike or sidecar.

- *Must be at least 48"*
- *Guests must transfer from a wheelchair.*
- *Intense speeds and sudden drops; lockers required for bags.*

### **HARRY POTTER AND THE FORBIDDEN JOURNEY**

A thrilling ride inside Hogwarts Castle that combines motion simulation and physical effects as you soar alongside Harry through iconic scenes.

- *Must be at least 48"*
- *Guests must transfer from a wheelchair.*
- *Not recommended for those with motion sickness, heart conditions, or back/neck issues.*

### **FLIGHT OF THE HIPPOGRIFF**

A family-friendly outdoor roller coaster that spirals around Hagrid's hut and offers views of the castle.

- *Must be at least 36"*
- *Guests under 48" must be accompanied by a supervising companion.*
- *Guests must transfer from a wheelchair.*

### **HOGWARTS EXPRESS – HOGSMEADE STATION**

A scenic train ride connecting Hogsmeade to Diagon Alley, featuring immersive storytelling and character interactions.

- *Park-to-Park ticket required*
- *No minimum height*
- *Guests under 48" must be accompanied by a supervising companion.*
- *Guests can remain in a standard wheelchair.*
- *Guests with ECVs must transfer to a manual wheelchair.*
- *No lap sitting – each rider needs their own seat.*

# HOGSMEADE

## *Dining Options*



### THREE BROOMSTICKS

A rustic, quick-service tavern serving traditional British fare like fish and chips, rotisserie chicken, shepherd's pie, and Butterbeer in a cozy, story-rich setting.



### HOG'S HEAD PUB

Attached to Three Broomsticks, this moody pub serves Butterbeer (cold, frozen, or hot), pumpkin juice, and a selection of beers on tap — including exclusive brews.



### BUTTERBEER CARTS

Mobile carts throughout Hogsmeade offer the iconic drink in cold, frozen, and hot varieties, along with Butterbeer ice cream and souvenir mugs.



### HOGSMEADE TREAT STANDS & SNACK CARTS

Various outdoor stands sell magical treats like Pumpkin Pasties, cauldron cakes, bottled Gillywater, and seasonal items depending on the time of year.

# HOGSMEADE

*Entertainment*



## TRIWIZARD SPIRIT RALLY

Watch visiting students from Beauxbatons and Durmstrang perform choreographed routines in a high-energy, live-action rally.



## FROG CHOIR

Enjoy an a cappella style performance by Hogwarts students harmonizing with giant singing frogs, featuring wizarding favorites.



## OLLIVANDERS WAND EXPERIENCE

Step inside the legendary wand shop for an interactive show where one guest is chosen as the wand chooses the wizard.



## INTERACTIVE WAND SPOTS

Use an interactive wand (available for purchase) to cast spells at various hidden spots, triggering magical effects.



## HOGWARTS ALWAYS – NIGHTTIME LIGHTS SHOW

A nighttime projection show that lights up Hogwarts Castle with iconic moments, house pride, and beloved characters.



# HOGSMEADE

## Shopping



### HONEYDUKES

A colorful candy shop packed with wizarding world sweets like Chocolate Frogs, Fizzing Whizzbees, and Bertie Bott's Every Flavour Beans.



### OLLIVANDERS WAND SHOP

Choose from character wands or interactive options in a shop filled with wand boxes stacked floor to ceiling — you can even witness the wand-choosing ceremony.



### DERVISH AND BANGES

A magical gear shop offering Quidditch supplies, house robes, Sneakoscopes, and other enchanted merchandise.



### OWL POST

Send letters with a special Hogsmeade postmark and browse owl-themed stationery, stamps, and plush owls.



### FILCH'S EMPORIUM OF CONFISCATED GOODS

Located at the exit of Forbidden Journey, this shop sells Hogwarts gear, movie prop replicas, and mischievous "confiscated" collectibles from students.



### HOGSMEADE STREET CARTS

Outdoor carts selling a rotating mix of souvenirs like plush magical creatures, house scarves, pins, and Butterbeer-themed merch.





# MINISTRY OF MAGIC

## Overview

*Universal Orlando's newest theme park, Epic Universe, introduces The Wizarding World of Harry Potter – Ministry of Magic, an immersive land blending elements from both the Harry Potter and Fantastic Beasts film series. This area transports guests to the heart of the British Ministry of Magic and the enchanting streets of 1920s wizarding Paris.*

## ATTRACTIONS

### HARRY POTTER AND THE BATTLE AT THE MINISTRY

This groundbreaking ride features a magical, omnidirectional lift that propels guests through the Ministry's departments, including the Department of Magical Creatures, the Time Room filled with Time-Turners, and the Magical Archives. The experience culminates in a thrilling chase to capture Dolores Umbridge, dodging Death Eaters and magical creatures along the way.

## ENTERTAINMENT

### LE CIRQUE ARCANUS

A live, full-scale theatre show set in the heart of the land, Le Cirque Arcanus follows Ringmaster Skender, who steals Newt Scamander's suitcase containing magical creatures, to revive his failing circus. Guests will be mesmerized by live performers, aerialists, puppetry, and special effects as they embark on this magical journey.

### INTERACTIVE WAND MAGIC

Utilize interactive wands to cast spells at various locations, interact with fantastic beasts like Nifflers and Bowtruckles, and engage with enchanted objects in storefront windows.



# MINISTRY OF MAGIC

## *Dining & Shopping*

### **CAFÉ L'AIR DE LA SIRÈNE**

A charming French café offering sandwiches, plats du jour, and desserts amidst stunning architecture adorned with fantastic beast mosaics.

### **LE GOBELET NOIR**

A mysterious Parisian auberge where dark witches and wizards gather, serving hearty meals in a shadowy ambiance.

### **BAR MOONSHINE**

An American-style bar featuring exclusive beers, wines, and cocktails, adorned with U.S. Quidditch team pennants and wizarding Americana.

### **BIÈRAUBEURRE CART**

A must-visit for fans, this cart offers the beloved Butterbeer in the heart of Place Cachée .

### **COSME ACAJOR BAGUETTES MAGIQUE**

A premier Parisian wand shop where guests can purchase exquisite wands designed by esteemed artisan Cosme Acajor. These wands come in unique three-sided boxes, each containing a list of locations throughout the wizarding world where guests can practice casting spells.

# BUTTERBEER

## *Locations*

*Arguably the most iconic beverage in the Wizarding World, Butterbeer is available in a variety of delicious forms throughout each of the lands!*

### BUTTERBEER POTTED CREAM

- The Leaky Cauldron–*Diagon Alley*
- Three Broomsticks–*Hogsmeade*

### BUTTERBEER CONFECTIONS

- Sugarplum's Sweet Shop–*Diagon Alley*
- Honeydukes–*Hogsmeade*
- Café L'air De La Sirène–*Place Cachée (Ministry of Magic)*

### BUTTERBEER ICE CREAM

- The Leaky Cauldron–*Diagon Alley*
- The Hopping Pot–*Diagon Alley*
- The Fountain of Fair Fortune–*Diagon Alley*
- Florean Fortescue's Ice-Cream Parlour–*Diagon Alley*
- Three Broomsticks–*Hogsmeade*

### COLD, FROZEN & HOT BUTTERBEER

- The Leaky Cauldron–*Diagon Alley*
- The Hopping Pot–*Diagon Alley*
- The Fountain of Fair Fortune–*Diagon Alley (cold and frozen only)*
- Three Broomsticks–*Hogsmeade*
- Hog's Head Pub–*Hogsmeade*
- Butterbeer Carts–*Hogsmeade*
- Bièraubeurre Cart–*Place Cachée (Ministry of Magic)*
- Universal Studios Store–*CityWalk*





# INTERACTIVE WANDS

## *throughout Wizarding Worlds*

### SECOND GENERATION INTERACTIVE WANDS

Have you ever dreamed of casting spells just like a real witch or wizard? The Second Generation Interactive Wands deliver upgraded designs, enhanced spell-casting precision, and customizable adventures through Universal Play. This advanced spell experience is now available across all three Wizarding World lands—Hogsmeade™, Diagon Alley™, and Place Cachée within The Wizarding World of Harry Potter™ – Ministry of Magic™—at Universal Epic Universe.



### WANDS, SPELL CASTING & UNIVERSAL PLAY

The new collection of Second Generation Interactive Wands features four innovative designs, enhancing the magical experience with unique illumination effects and haptic feedback for spell-casting. Each wand includes a spell map highlighting practice locations and tips to improve your skills. With five new interactive wand sites added across Hogsmeade™, Diagon Alley™, and the Ministry of Magic™, the total now reaches over 30 spell locations. Existing sites have also been upgraded with more immersive effects and magical spell-books. Guests can personalize their journey by unlocking unique spell effects, earning points for their Hogwarts™ House, casting their own Patronus, and accessing even more enchantments through the Universal Orlando Resort App.

### ADVENTURES

Second Generation Interactive Wands are set to take you on thrilling adventures throughout all three parks of The Wizarding World of Harry Potter. Get ready for exhilarating experiences in Knockturn Alley, enhance your elemental spells, and perhaps indulge in a few playful pranks if you're feeling cheeky. With Universal Play, you'll unlock exclusive adventures that elevate your wizarding skills, allowing you to achieve various accomplishments. In Universal Play within The Wizarding World of Harry Potter, you'll also gain access to a digital map that helps you navigate all three parks, guiding you to both spell-casting and Adventure locations. Whether you're setting off on an Adventure or showcasing your magical abilities, your map will be your companion in the excitement.

